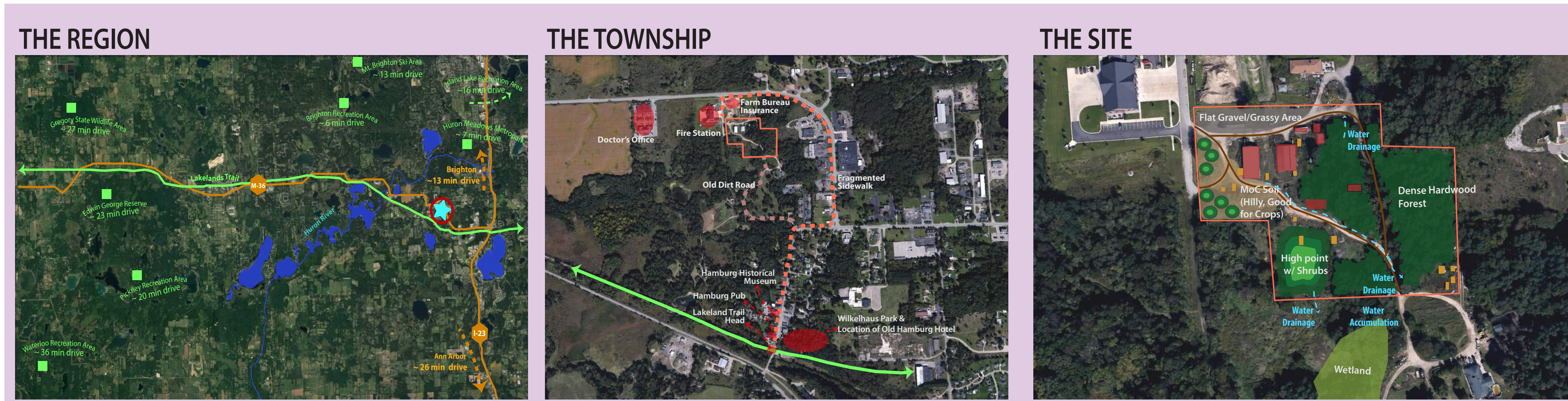


COMMUNITY PLUS SITE PROPOSAL

Current Condition of Hamburg, MI



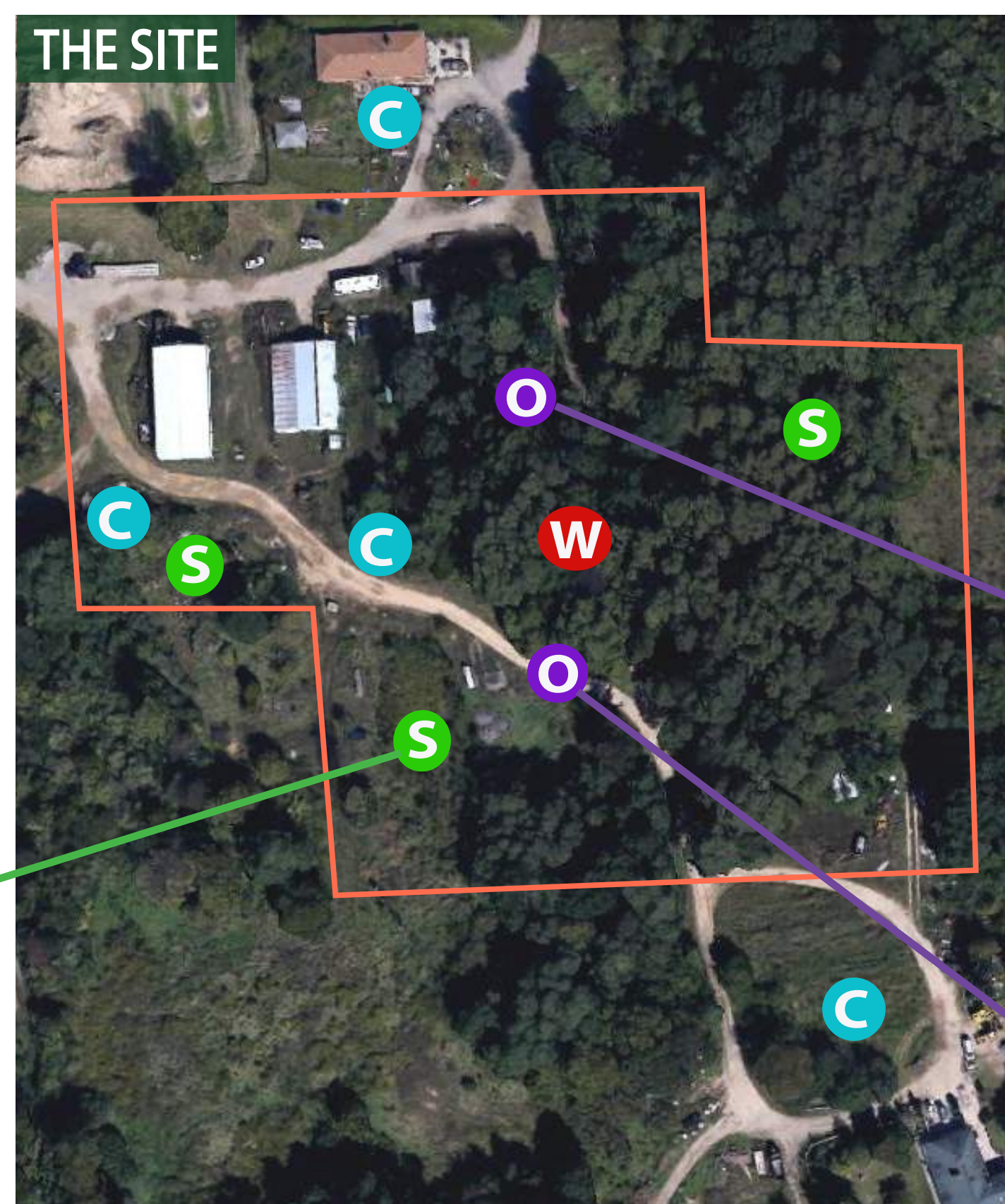
Conceptual Map



Site Inventory Analysis

STRENGTHS

- Mix of wooded area and open space
- History of agriculture
- Hilly area, variety of terrain can serve different purposes
- Lakeland Trails: 20 miles long, 15 minute walk from site
- Recreation activities in area: trail, water, etc.



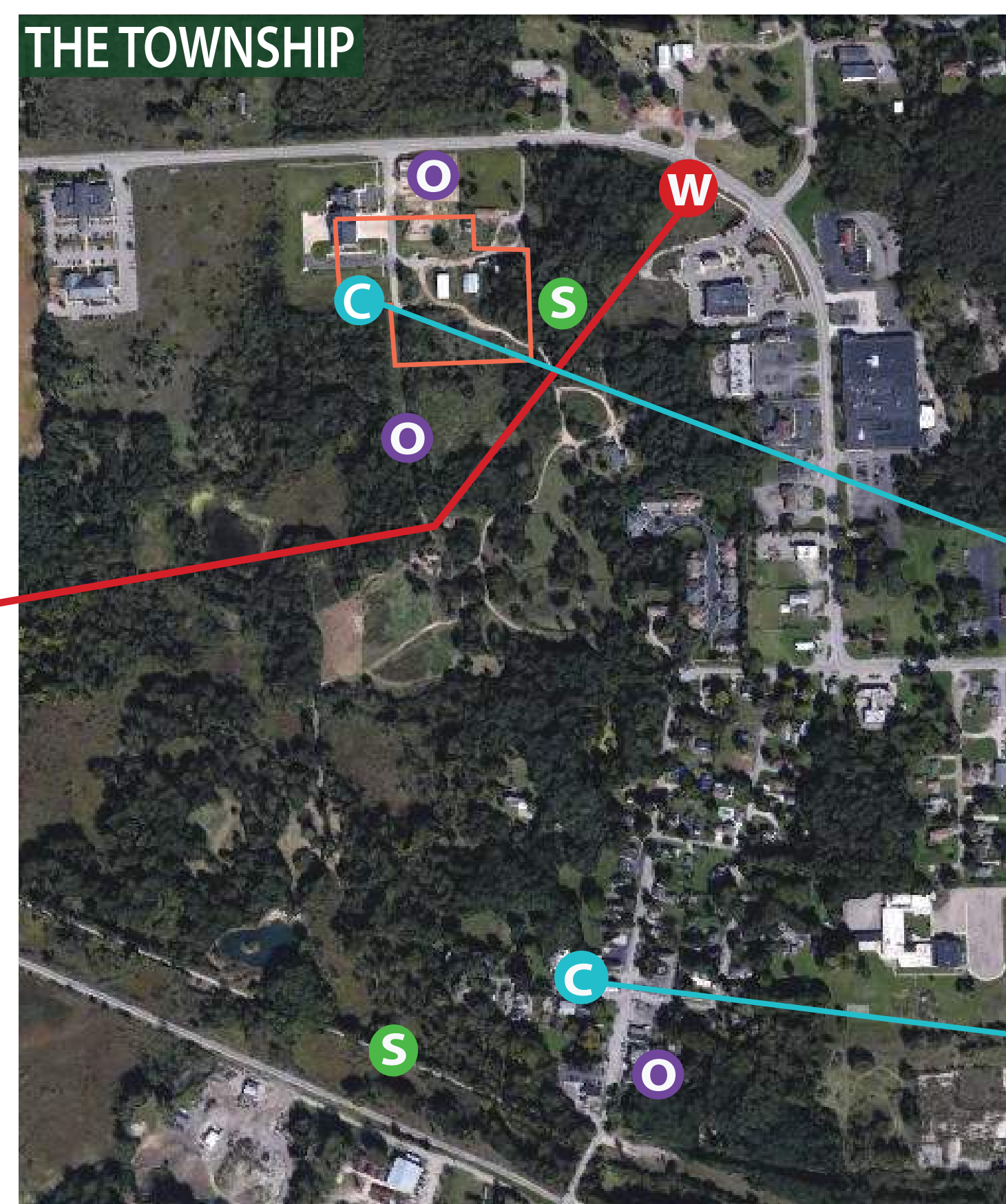
OPPORTUNITIES

- Shipping containers on site
- Connect to the Lakeland Trails
- Nearby businesses with parking spaces as an option of overflow parking
- Tap into "destination" spot for tourists



WEAKNESSES

- Debris to clear and terrain to clear and level out
- Not very accessible with fragmented sidewalk throughout town



CONSTRAINTS

- Consideration of neighbors
- Hilly area and diverse terrain (also a strength)
- Little activity in downtown area, businesses with infrequent hours of operation



Adjacency Matrix

	Play Area	Hotel/Brewery	Small Pub	Bike Shop	Community Center	Parking Lot	Pheasant Coop	Garden	Walk/Bike Path	Road (Cars)	Greenhouse	Wooded Areas
Play Area	↔	↗	↘	↗	↗	↘	↔	↔	↔	↘	↔	↗
Hotel/Brewery	↗	↔	↘	↔	↘	↘	↗	↗	↗	↘	↗	↗
Small Pub	↘	↘	↔	↘	↘	↘	↔	↔	↗	↘	↔	↗
Bike Shop	↗	↘	↗	↔	↗	↗	↔	↔	↗	↘	↔	↔
Community Center	↗	↘	↘	↗	↔	↗	↗	↗	↗	↘	↗	↗
Parking Lot	↘	↘	↘	↗	↗	↔	↘	↘	↔	↗	↘	↘
Pheasant Coop	↔	↗	↗	↔	↗	↘	↔	↗	↗	↘	↗	↗
Garden	↔	↗	↗	↔	↗	↘	↗	↔	↗	↘	↗	↘
Walking/Bike Path	↗	↗	↗	↗	↗	↔	↗	↗	↔	↘	↗	↗
Road (Cars)	↘	↘	↘	↗	↗	↗	↘	↘	↘	↔	↘	↘
Greenhouse	↗	↗	↗	↗	↗	↘	↗	↗	↗	↘	↔	↘
Wooded Areas	↗	↗	↗	↔	↔	↘	↗	↘	↗	↘	↔	↔

↗ Adjacency is essential
↔ Adjacency is unimportant
↘ Adjacency is desirable but not essential
↖ Adjacency should be avoided

COMMUNITY PLUS SITE PROPOSAL

Alyssa Cudmore, Lauren Grove
Samantha Olson & Richa Yadav
Site Inventory Analysis
UP 696 | Fall 2016

The Site Plan



PHASE I - 2 YEARS



Hotel Inspired by the Winkelhaus Hotel
(built in 1835, destroyed in 1968)



Community Center with a
Venue for Various Events



Utilize Shipping Container
for Small Pub

PHASE II - 5 YEARS



Landscaped Play Area



Expansion of the Lakeland Trails



Greenhouse and Garden On-Site



Clear Wooded Area for Picnics

Amenities



HOTEL AND BREWERY

A place for tourists to stay the night or for their get-away trip, and creating a destination location for both tourists and locals to enjoy a meal and brew.



COMMUNITY CENTER

The first floor will include a welcome center with maps and visitor information. The second floor and parts of the first floor will include a pool, workout equipment, meeting rooms, fitness rooms, and spaces for groups to meet.



AGRICULTURE

Emphasizing the agricultural history of this site (and the township as a whole), plans for the greenhouse, pheasant coop, and community garden will include educational programming to encourage local farmer's market.



SHIPPING CONTAINER PUB

OUTDOOR GEAR SHOP

Complementing the existing recreational opportunities throughout the Hamburg Township region, the shop will operate as a rental hub for locals and tourists. Gear may include bikes, kayaks, canoes, fishing equipment, gardening tools, and so on.



LANDSCAPED PLAY AREA

Proposed Development by the Numbers

	Acerage	Dimensions	Height
Play Area	1.13 acres	310' X 155'	
Hotel/Brewery	0.29 acres	180' X 70'	3 stories (36')
Small Pub	0.01 acres	48' X 9'	1 story (12')
Bike Shop	0.04 acres	60' X 32'	1 story (12')
Community Center	0.2 acres	110' X 80'	2 stories (24')
Parking Lot	0.18 acres	220' X 35'	
Pheasant coop	0.02 acres	32' X 24'	
Garden	0.23 acres	129' X 79'	
Walking Path		10' wide	
Road (Cars)		26' wide	
Greenhouse	0.02 acres	32' X 24'	1 story (12')
Wooded Areas	3.35 acres		
Bike Path		15' wide	
Total Acres	5.47		