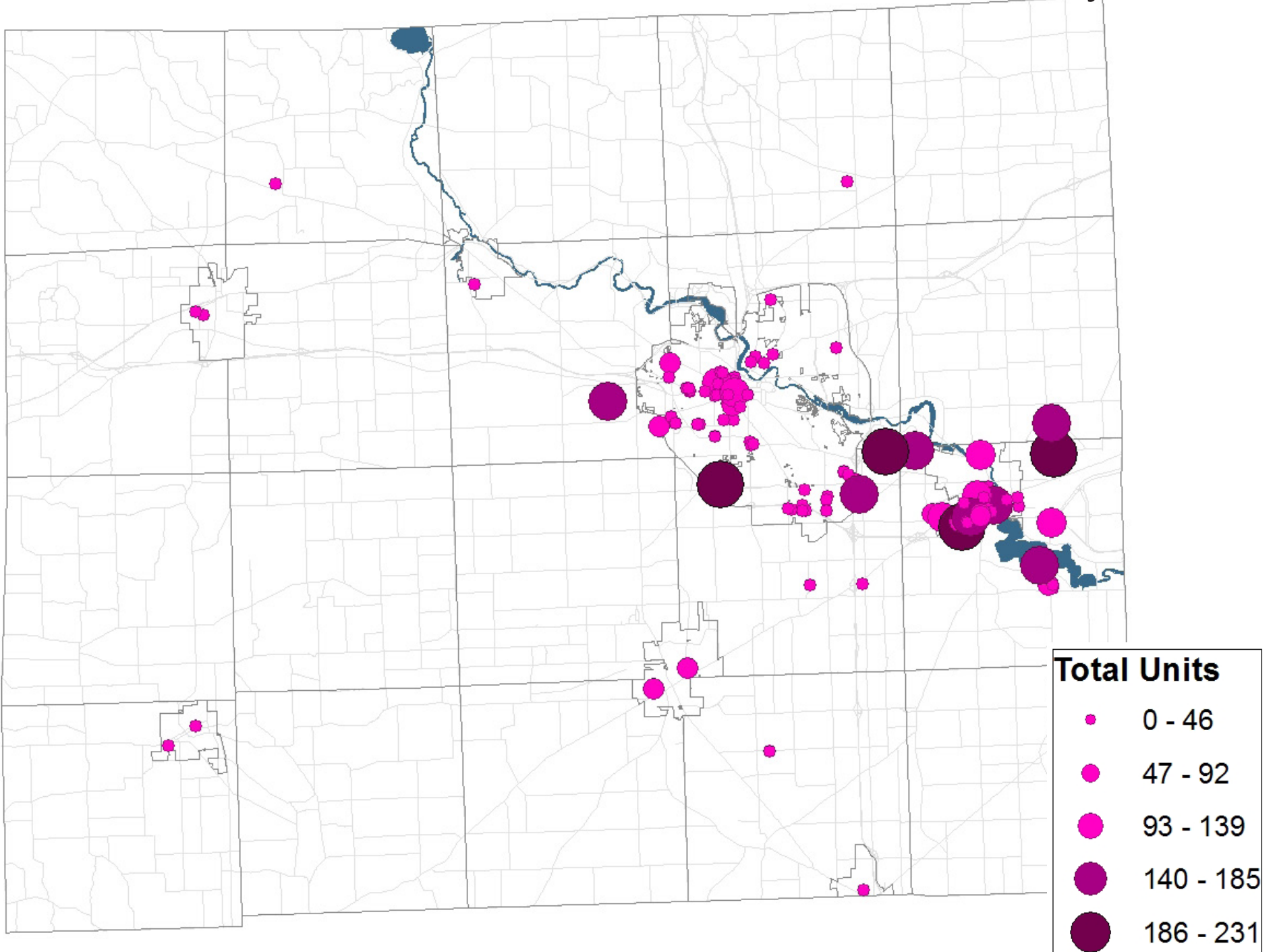
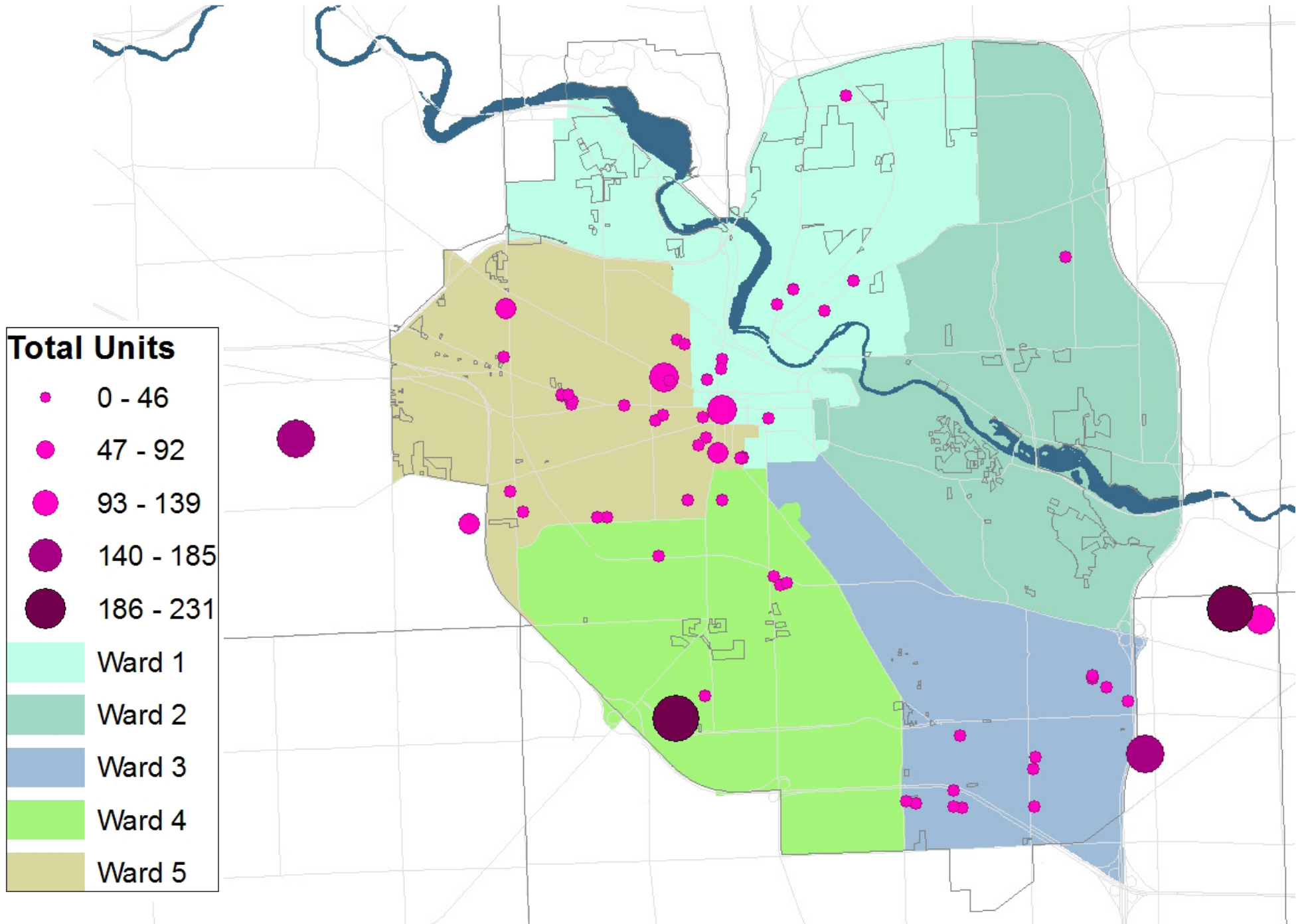


# Committed Affordable Units in Washtenaw County



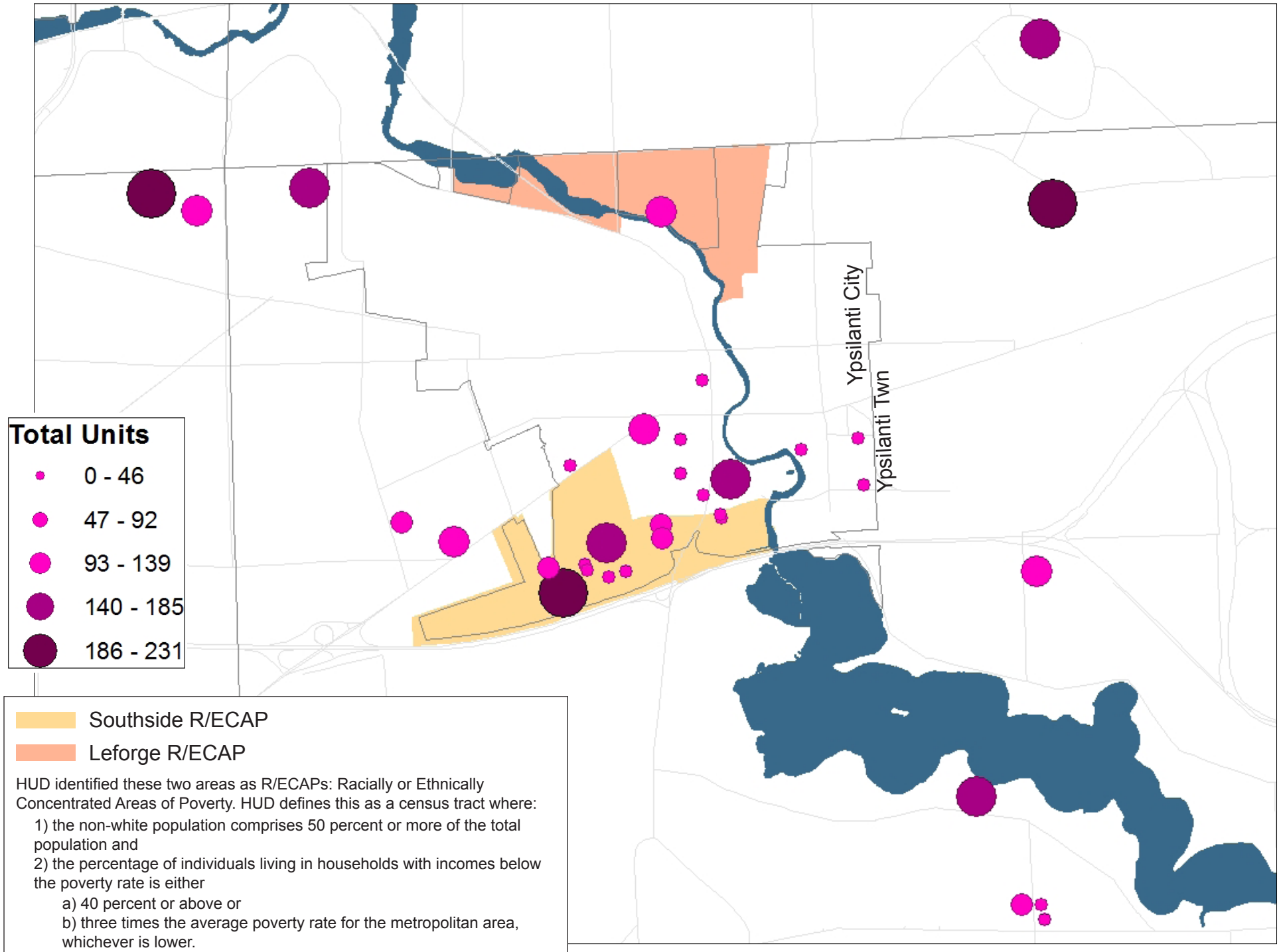
Source: Affordable Housing Counts from Washtenaw County Affordable Housing Inventory 2017

# Committed Affordable Units in Ann Arbor, MI



Source: Affordable Housing Counts from Washtenaw County Affordable Housing Inventory 2017

# Committed Affordable Units in City of Ypsilanti and Ypsilanti Township, MI



## 2017 Washtenaw County Housing Inventory

### Committed Affordable Units in Washtenaw County, by Jurisdiction

Jurisdiction	Number of Locations	Number of Units	% of Units
City of Ann Arbor	61	1,106	26%
City of Chelsea	3	73	2%
City of Dexter	1	20	0%
City of Milan	1	36	1%
City of Saline	3	96	2%
City of Ypsilanti	21	990	23%
Northfield Township	1	1	0%
Pittsfield Township	5	464	11%
Scio Township	2	216	5%
Superior Township	1	150	4%
Village of Manchester	2	56	1%
Ypsilanti Township	10	1,012	24%
TOTAL	111	4,220	

### Committed Affordable Units in Ann Arbor, by Wards

	Number of Locations	Number of Units	% of Units
Ward 1	11	215	19.4%
Ward 2	1	23	2.1%
Ward 3	14	103	9.3%
Ward 4	7	276	25.0%
Ward 5	28	489	44.2%
TOTAL	61	1106	

### Committed Affordable Units in Ypsilanti City and Township

City of Ypsilanti	21	990	23%
Ypsilanti Township	10	1,012	24%
Leforge	1	142	18%
SOMA	11	632	82%
Total	12	774	18%
TOTAL	31	2,002	

**Committed Affordable Housing Units:** Physical housing units available to households at or below 60% AMI. These units have both rent and income limits to maintain affordability over time. These limits are due to use of one or more incentive including use of local, state or federal subsidy, such as LIHTC, grants, public land, and so on.

Source: Affordable Housing Counts from Washtenaw County Affordable Housing Inventory 2017